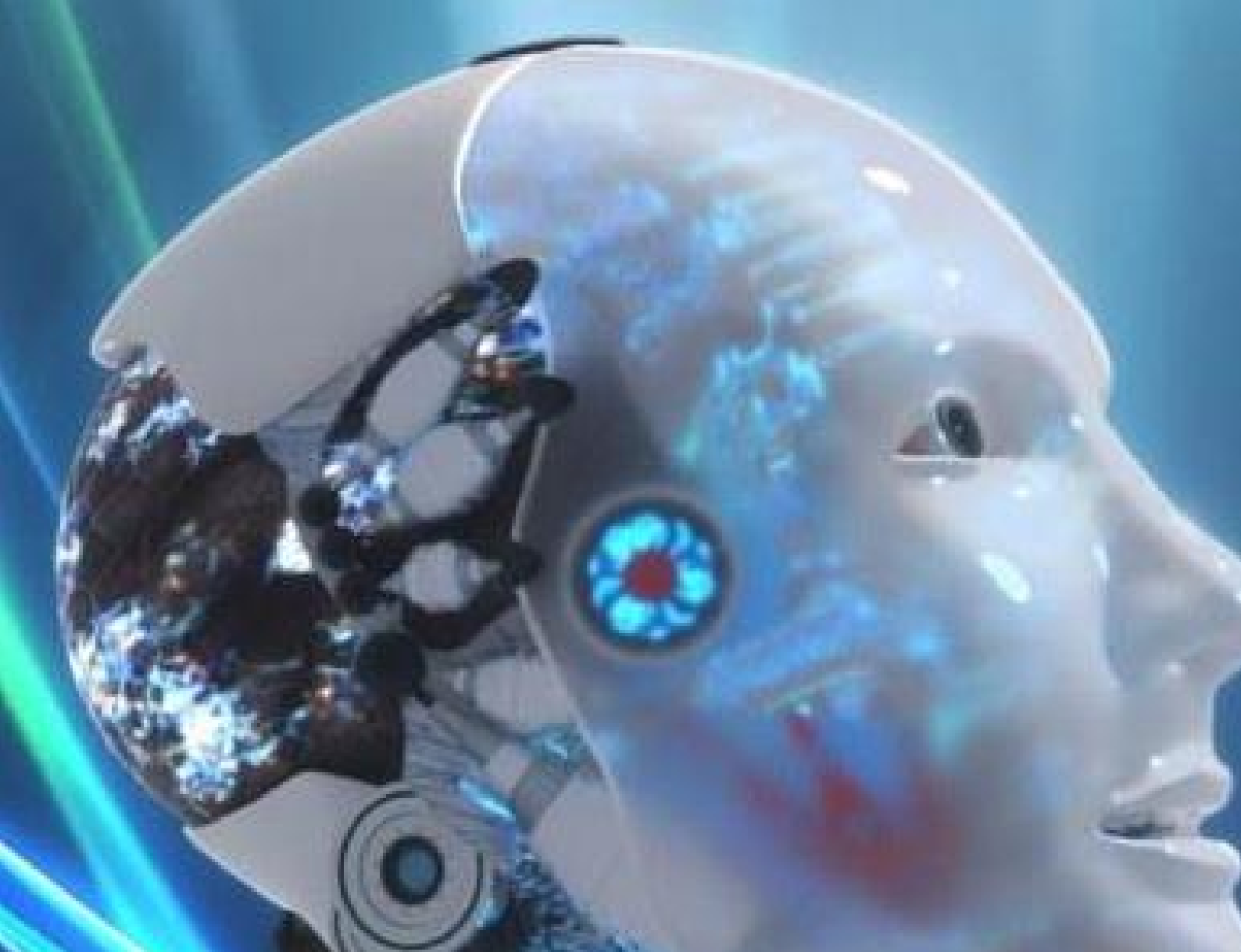


DEVELOPING IDEAS INTO REALITY

www.digitalkura.com

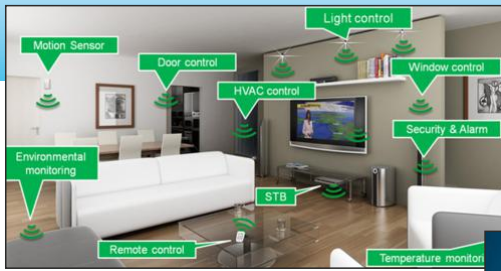


kura inn (p) ltd is an organized group and associate partner of UTL power and Helonix industries Pvt. Ltd. where we leveraging the skills of our qualified team of professionals.

we are instrumental in manufacturing & wholesaling of all kinds of IOT based product and development. we are highly reckoned firm of the industry that has come into being with a view to being the customer's most preferred choice.

kura has gained name & fame in developing solution in user comfort, securities and savings of modern, aesthetically designed by several years of R&D.

kura products undergo rigorous testing for extreme performance, failure protection by adding second hardware in same device like the technic which is used in air crafts called second engine. to deliver high performance to the need of the end user.



- Light Control
- Motion Sensor
- Environmental Monitoring
- Remote Control



Security and Alarm
HVAC Control
Door Control
Window Control
STB



Home Securities

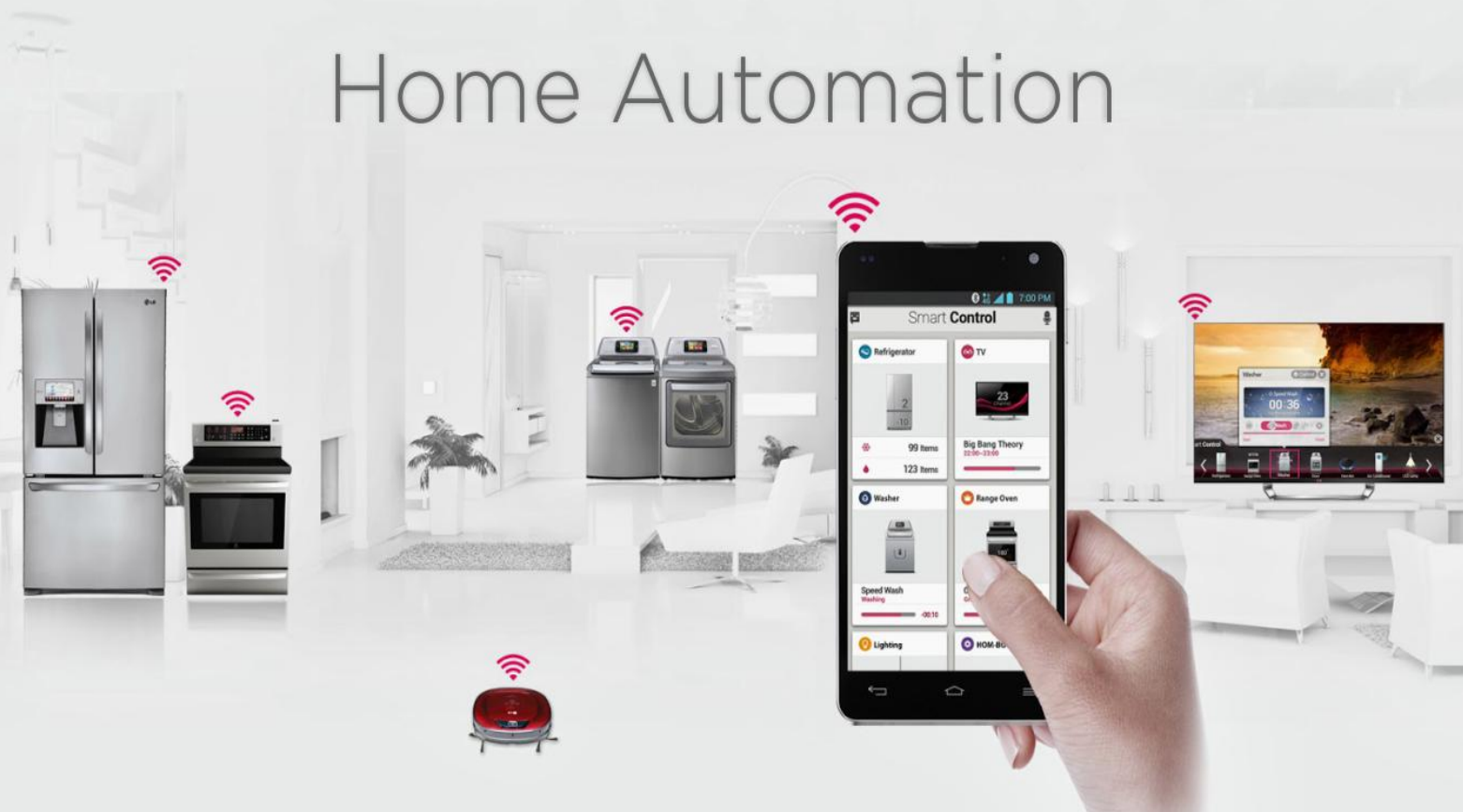
One mobile app for all equipments and their remote

Now there is no requirement of nos of remote as all one access in your mobile thanks to our cloud based security and voice based home automation app and devices.

A new way to live secure and comfortable.



Home Automation





HOME AUTOMATION

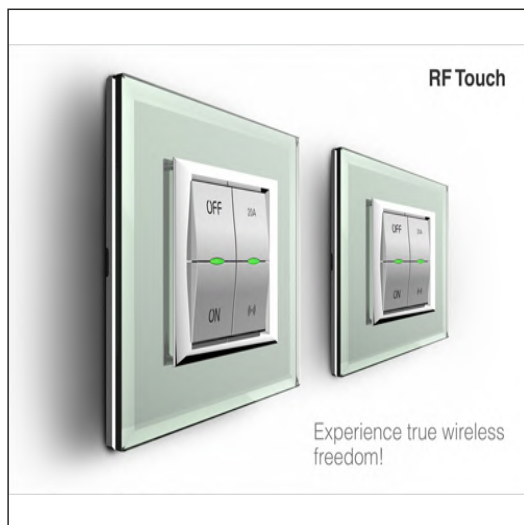
Reliable, Comfortable & Easy to install

Pocket Friendly And Low Maintenance

A Very Efficient Service Chain Management

Online Service Support, Huge Amount Of Data Base,

Alexa Voice Control Voice & Dedicated R&d Team For All Time Innovation



TECHNICAL SPECIFICATIONS AND FEATURES

- ✦ Max load capacity upto 3 KW.
- ✦ Easy to install.
- ✦ Voltage consumption less then 5 W at running condition or 0. 1 W at normal condition.
- ✦ Low and high voltage sensing with auto cut feature and real time power consumption report.
- ✦ Reliable performance with built-in double watchdog
- ✦ Low maintenance, 24X7 operation and customer care
- ✦ compatible with alexa and google voice
- ✦ Input voltage 220 V ac



WIRELESS AUTOMATIC MOTOR CONTROLLER

"Your tank si full, switch off the motor"



IS HE YOUR NEIGHBOUR?

MOTOR CONTROLLER

SAVER WATER SAVE EARTH

Smart & Intelligent

Fully Automatic Water Level Controller,
No Need To Switched On & Off Motor,
Rust Free Sensors, Auto/manual Operation



If tank goes full, motor will be off, if water level goes less then 60% motor would be on automatically. It means electricity and water savings.



When sensor detects water supply available in main line and tank level is below 60% it turns on the motor, So no need to wake up early morning as municipal water timing.



Even a single drop of water will not go waste your roof will be always safe, all are these called money savings.



Seven segment digital display for volt, amp and to show water percentage. Protect your motor from hi/low voltage and overload.



Motor dry run protection, no low pressure problem we use air pressure sensor to sense municipal water from 100 mtr.



This is a wireless technologies no need of any wire up to fifth floor.

This model of kura has been designed keeping in mind those consumers who ask for cheap and best. So we used 95% amount of product manufacturing cost in its mechanism only so that we could give best performance quality at affordable price.

TECHNICAL SPECIFICATIONS AND FEATURES

- ✦ Auto turn on/off motor according to water level position.
- ✦ Auto/manual mode for all operation.
- ✦ Restart push button for marginal empty tank.
- ✦ Three led indicators to show motor and water status.
- ✦ Upper and ground water tanks can be connected with one device.
- ✦ Max load capacity up to 3 HP pump.
- ✦ Rust and corrosion free sensor.
- ✦ Easy to install.
- ✦ Suitable for both ground water pump and municipal line water.
- ✦ Can be made wireless with our wireless module.
- ✦ Voltage consumption less then 2 W at running condition or 0.5W at normal condition.



This model is designed for young India. Smart feature in smart and new look, Real time water percentage with voltage sensing and protection

TECHNICAL SPECIFICATIONS AND FEATURES

- ✦ Auto turn on/off motor according to water level position.
- ✦ Auto/manual mode for all operations.
- ✦ Restart push button for marginal empty tank.
- ✦ Seven segment display to show motor and water status.
- ✦ Upper and ground water tanks can be connected with one device.
- ✦ Max load capacity up to 3 HP pump.
- ✦ Rust and corrosion free sensor.
- ✦ Easy to install.
- ✦ Suitable for both ground water pump and municipal line water.
- ✦ Can be made wireless with our wireless module.
- ✦ Voltage consumption less then 2 W at running condition or 0.5W at normal condition.
- ✦ Low and high voltage sensing with auto cut feature and real time over load motor protection.
- ✦ TDR (Time Delay Relay) protection for your motor
- ✦ Dry run protection.



DIGITAL INTELLIGENT MOTOR CONTROLLER

This model of kura has been designed by having priority for complete safety of consumer's costly motor. Moreover the design, look and LCD display shows its rich class and status.

TECHNICAL SPECIFICATIONS AND FEATURES



- ✦ Auto turn on/off motor according to water level position.
- ✦ Auto/manual mode for all operations.
- ✦ Restart push button for marginal empty tank.
- ✦ LCD display to show date, time, volt, amp and motor/ water status.
- ✦ Upper and ground water tanks can be connected with one device.
- ✦ Max load capacity to 3 HP pump.
- ✦ Rust and corrosion free sensor.
- ✦ Easy to install.
- ✦ Suitable for both ground water pump and municipal line water.
- ✦ Can be made wireless with our wireless module.
- ✦ Voltage consumption less than 2 W at running condition or 0.5 W at normal conditions
- ✦ Low and high voltage sensing with auto cut feature and real time over load motor protection.
- ✦ TDR (Time Delay relay) protection for your motor.
- ✦ Time setting option for max motor running time
- ✦ Dry run protection, input voltage -220 V AC
- ✦ Low maintenance, 24x7 operation

LEVEL ALARM

WATER ALARM WITH LEVEL PERCENTAGE

This is an economical model from kura for those who love to save money, water and electricity with a economical device.

TECHNICAL SPECIFICATIONS AND FEATURES

- ✦ Loud and soft voice alarm with on/off button.
- ✦ Seven segment display to show motor and water status.
- ✦ Rust and corrosion free sensor.
- ✦ Easy to install.
- ✦ Can be made wireless with our wireless module.
- ✦ Voltage consumption less than 0.3 W at running condition
- ✦ Input voltage -220 V AC, Low maintenance, 24 x 7 operation



AMC SUBMERSIBLE

SUBMERSIBLE PUMP CONTROLLER

This model of kura is designed for ground water deep pump. After a several years market study we found that no company making such panel that can auto controlled motor by sensing water level, voltage and current amp with combination of starting and running capacitor and this is all in auto mode.

TECHNICAL SPECIFICATIONS AND FEATURES

- ✦ Auto turn on/off motor according to water level position.
- ✦ Auto/manual mode for all operations.
- ✦ LCD display to show volt, AMP and motor/water status.
- ✦ Max load capacity up to 3 HP pump.
- ✦ Rust and corrosion free sensor.
- ✦ Easy to install.
- ✦ Can be made wireless with our wireless module.
- ✦ Voltage consumption less then 5 W at running condition or 0.5 W at normal condition.
- ✦ Low and high voltage sensing with auto cut feature and real time over load motor protection
- ✦ TDR (Time Delay Relay) protection for your motor.
- ✦ Dry run protection
- ✦ Available in 1, 1.5 & 2 W
- ✦ Suitable for both types of motor oil filed and water filed.
- ✦ Made with heavy duty running and starting capacitor
- ✦ Input voltage 220 V AC, Low maintenance, 24x7 operation



AMC TRACKER

TRACKING BASED MOTOR CONTROLLER

This model is based on tracking of any liquid such as water, oil, milk and other liquid tanks. This device can work on base of GSM, SMS or IR module and sources. Get real time information on your mobile or tab and start or stop motor by just a sms From any where in the world.

TECHNICAL SPECIFICATIONS AND FEATURES



- ✦ Max Load up to 3 HP pump.
- ✦ Easy to install.
- ✦ Voltage consumption less than 5 W at running condition or 0.5 W at normal condition.
- ✦ Low and high voltage sensing with auto cut feature and real time over load motor protection.
- ✦ TDR (Time Delay Relay) protection for your motor.
- ✦ Dry run protection
- ✦ Configurable for alarm and recover sms
- ✦ Automatically report the status of itself on schedule
- ✦ Support remote setting via sms commands
- ✦ Automatically update internal clock via sms
- ✦ Support ring call when alarm
- ✦ Internal battery (optional)
- ✦ Reliable performance with built-in double watchdog
- ✦ Low maintenance, 24x7 operation

SUBMERSIBLE KIT

SUBMERSIBLE PANEL CONTROLLER KIT

This model has designed to control contactor type submersible panel those have starting and running capacitor. Since in these types of panel its highly required to press green button for 2 Sec (for starting capacitor) as starter self. We design this kit in same technology to give starting with one relay for 2 Sec and continue by second relay.

TECHNICAL SPECIFICATIONS AND FEATURES



SUBMERSIBLE KIT

- ✦ Auto turn on/off motor according to water level position.
- ✦ Auto/ manual mode for all operations.
- ✦ Restart push button for marginal empty tank.
- ✦ Seven segment display to show motor and water status.
- ✦ Max load capacity up to 3 HP pump.
- ✦ Rust and corrosion free sensor.
- ✦ Easy to install.
- ✦ Can be made wireless with our wireless module.
- ✦ Voltage consumption less then 2 W at running condition or 0.5 W at normal condition.
- ✦ Low and high voltage sensing with auto cut feature and real time over load motor protection.
- ✦ TDR (Time Delay Relay) protection for your motor.
- ✦ Dry run protection.
- ✦ Double relay for starting and running capacitor
- ✦ Suitable for all existing submersible panels.

SENSOR S.S TYPE

STAINLESS STEEL SENSOR

S.S. type sensor for long lasting performance. Design to use universally with any device. Rust and corrosion Free with long wire. Can be used with upper tank and ground water line.

TECHNICAL SPECIFICATIONS AND FEATURES



SS pin molded within Polypropylene
Cable Length 1.5 Meters completely
insulated wire joints
SS-314 pins are used in it to avoid the rust
and chemical resistant



SENSOR MAGNETIC

MAGNETIC SENSOR

A float switch is a device used to sense the level of liquid within a tank. When the float ball rises or falls with the liquid to the level of the switch, the magnetic force of magnet which inside of the float ball will cause the reed switch to turn ON. When the float ball move away form the reed switch, the reed switch will cturn OFF.

TECHNICAL SPECIFICATIONS AND FEATURES



- ✦ Sensing Both Side of Sensor
- ✦ Corrosion Free Material
- ✦ Advance Magnetic Technology
- ✦ Cable Length -2 meter
- ✦ Max Switch Current - 500 mA (DC)
- ✦ Max Switch Watt - 10 W

Other details:

Product Dimensions : 13.5 x 4.7 x 4.7 cm

Current Rating (In Amps) : Current 5 to 50mA

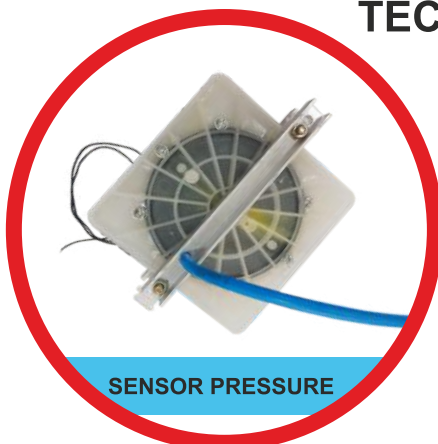
Power/Voltage 2 to 12V

SENSOR PRESSURE

AIR PRESSURE SENSOR

Air pressure sensor is used on applications where water pressure is very low, like mcd water this sensor can work on a very low pressure such as 0.01 PSI. As soon as water comes to line around 100 Meter far from motor point it detect water and motor goes turn on motor to pull the water more closer.

TECHNICAL SPECIFICATIONS AND FEATURES



- ✦ Air tight pipe for sensing water pressure
- ✦ Corrosion Free Material
- ✦ Advance Technology
- ✦ Cable Length 0.5 meter
- ✦ Max Switch current: 500 MA (DC)
- ✦ Max Switch Watt: 10 W
- ✦ Current Rating (In Amps): Current: 5 to 50 MA
- ✦ Power/Voltage 2 to 12V

GPS TRACKER

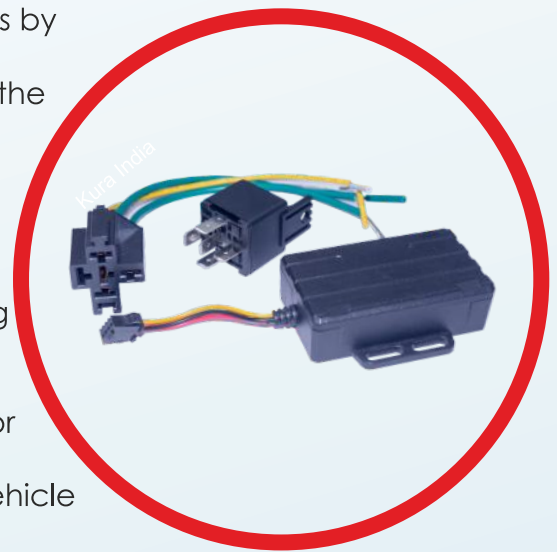


PERSONAL AND VEHICLE TRACKING SYSTEM

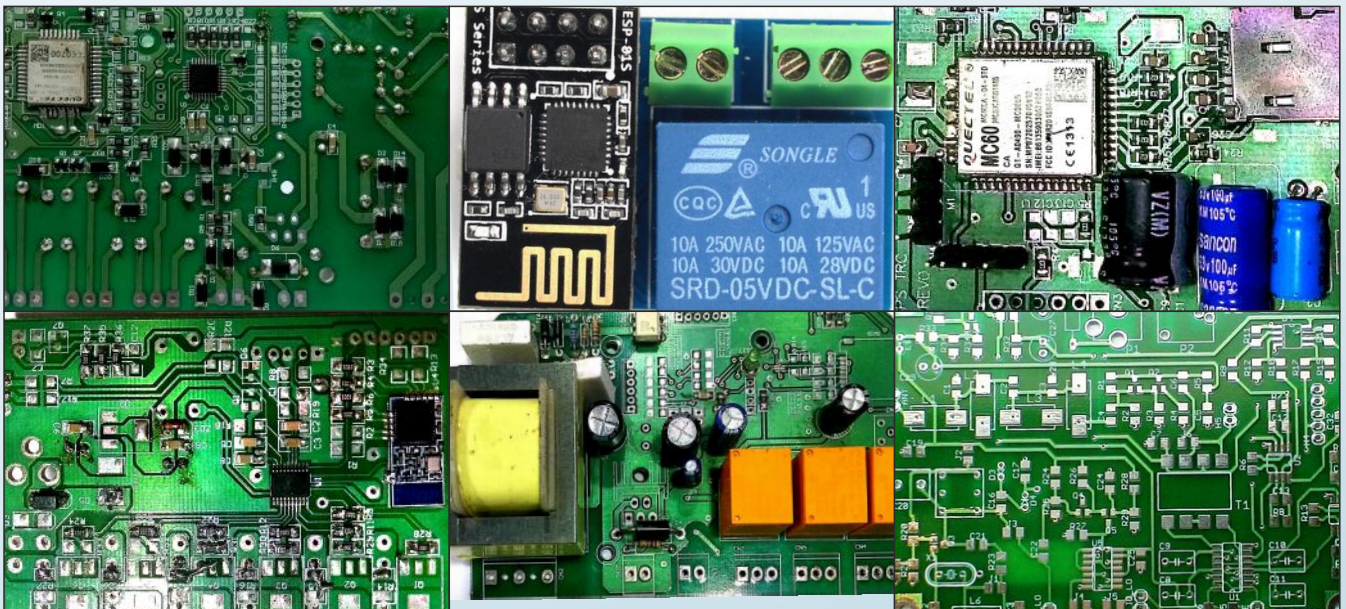
Working Based on existing GSM/GPRS network (850/900/1800/1900Mhz) and GPS satellites, this product can Locate and monitor any remote target by SMS or internet.

TECHNICAL SPECIFICATION AND FEATURES

- ✦ Change Password Authorization Single locating
- ✦ auto track continuously automatic update positions of vehicle
- ✦ Turns GPS drift suppression absolute street address by SMS location based service (**LBS**)
- ✦ Voice Monitor - data logging data load forward the third parties message
- ✦ charges inquiry alarm function low battery alarm external power off alarm
- ✦ GPS blind spot alert SOS Geo-fence Multi area management
- ✦ Movement alarm over speed alarm ACC working alarm
- ✦ Fuel alarm cut off the oil and power system
- ✦ Arm silent mode DISARM door alarm, shock sensor alarm
- ✦ Alarm without GSM network service check the vehicle state
- ✦ Reset hardware sleep mode by time sleep by shock sensor no sleep mode.



R&D DESIGN HOUSE EXPERTISE IN IOT BOARD DEVELOPMENT



FAN BLDC

BLDC FOR DC/SOLAR POWER

Working based on micro controller circuit to reduce power consumption up to 50 percent. Because this can works on dc power, it has much longer life than AC power operated fan.



Features:

- BLDC Three Phase Winding Motor
- Low Power Consumption (power Saving Upto 50%)
- Low Noise
- Blades Replaceable In Various Sizes (36"/48"/56")
- 4 Speed Controller
- Wind Type = Soft And Strong
- Over Voltage Protection
- Over Current Protection

Specification

- Fan Type
- Type Of Motor
- Rated Voltage
- Blade Diameter
- Blade Type
- Power Consumption
- Bearings
- Speed Level
- Reverse Polarity Protection
- Rpm

- BLDC Ceiling Fan With Remote
- BLDC Motor
- 230 V AC
- 48" (1200 mm)
- Aluminum Powder Coated
- 30 Watt AC
- 2 Double Z Ball Bearing
- 4 Speed Electronically Controlled
- Yes
- 360

www.digitalkura.com

12 Volt 16" BLDC Pedestal Fan

- Model
- Type of Motor
- Rated Voltage
- Blade Diameter
- Blade Type
- Power Consumption
- Speed Level
- Reverse Polarity Protection
- Type



Hi Speed Fan

- Grand - 16
- BLDC
- 12 Volt
- 12" (400mm)
- Poly Propylene (PP)
- 20-24 Watt Max.
- 3 Speed Piano Switch
- Yes
- Oscillating only

Features :

- Uses State of art Brushless DC Motor
- Low power consumption (Power saving upto 50%)
- Low noise/ No heating
- Standard Warranty : 1 Year
- Wind Type = Soft and strong
- Over voltage protection
- Over Current protection

12" BLDC Pedestal Fan

- Model
- Type of Motor
- Rated Voltage
- Blade Diameter
- Blade Type
- Power Consumption
- Speed Level
- Reverse Polarity Protection
- Type



- Grand - 12
- BLDC
- 12 Volt
- 12" (400mm)
- Poly Propylene (PP)
- 12-15 Watt Max.
- 3 Speed Piano Switch
- Yes
- Oscillating only



Table Fan

Features:

- Uses State of art Brushless DC Motor
- Low power consumption (Power saving upto 50%)
- Low noise/ No heating
- Standard Warranty : 1 Year
- Wind Type = Soft and strong
- Over voltage protection
- Over Current protection

12" BLDC Table Fan

- Model
- Type of motor
- Rated Voltage
- Blade Diameter
- Blade Type
- Power Consumption
- Speed Level
- Reverse Polarity Protection
- Type
- Guard

- Eco - 12
- BLDC
- 12 Volt
- 12" (300mm)
- Poly Propylene (PP)
- 12-15 Watt Max.
- 3 Speed Rotary Switch
- Yes
- Oscillating only
- Metal Powder Coated

12" BLDC Table Fan

- Model
- Type of motor
- Rated Voltage
- Blade Diameter
- Blade Type
- Power Consumption
- Speed Level
- Reverse Polarity Protection
- Type
- Guard

16" BLDC Table Fan

- Model
- Type of motor
- Rated Voltage
- Blade Diameter
- Blade Type
- Power Consumption
- Speed Level
- Reverse Polarity Protection
- Type
- Guard

- Elite - 16
- BLDC
- 12 Volt
- 16" (400mm)
- Poly Propylene (PP)

- 20-24 Watt Max.
- 3 Speed Piano Switch
- Yes
- Oscillating only
- Metal Powder Coated





STREET LIGHT

Strong & Durable

Heavy Aluminium Die Cast body
120 Lumens per watt at output
power factor >0.9
SMD LEDs used for better life & spread



CRI >80
INPUT 90-320 AC



2 YEARS
warranty

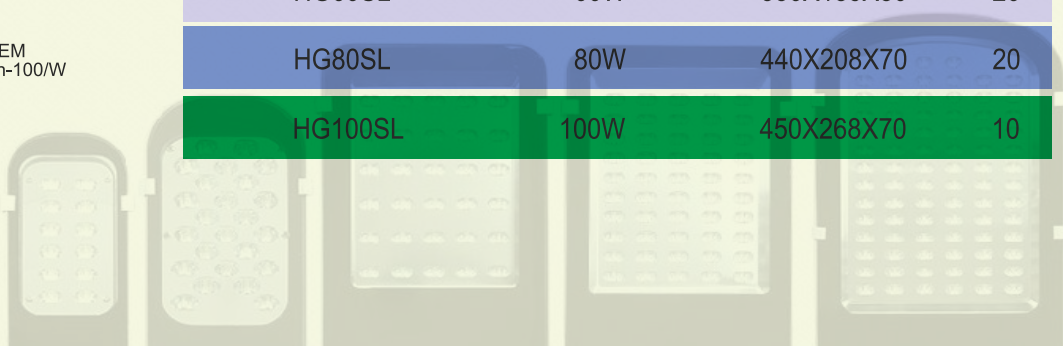


COLOR
warm-natural-cool



SYSTEM
Lumen-100/W

Product Code	Wattage	Outer	Pkg.
HG20SL	20W	345X95X60	20
HG30SL	30W	345X95X60	20
HG40SL	40W	400X148X60	20
HG50SL	50W	330X185X80	20
HG60SL	60W	330X185X80	20
HG80SL	80W	440X208X70	20
HG100SL	100W	450X268X70	10



FLOOD LIGHT

Brighter, Stronger & Durable

Heavy Aluminium Die Cast
120 Lumens per watt at output
Power factor>0.9
SMD LEDs used for better life & extra spread



CRI >80
INPUT 90-320 AC



YEARS
warranty



COLOR
warm-natural-cool



SYSTEM
Lumen-100/W

Product Code	Wattage	Outer	Pkg.
HG30FL	30W	192X172	20
HG50FL	50W	253X202	20
HG70FL	70W	288X250	20
HG100FL	100W	288X250	10
HG150FL	150W	380X294	10
HG200FL	200W	380X294	10

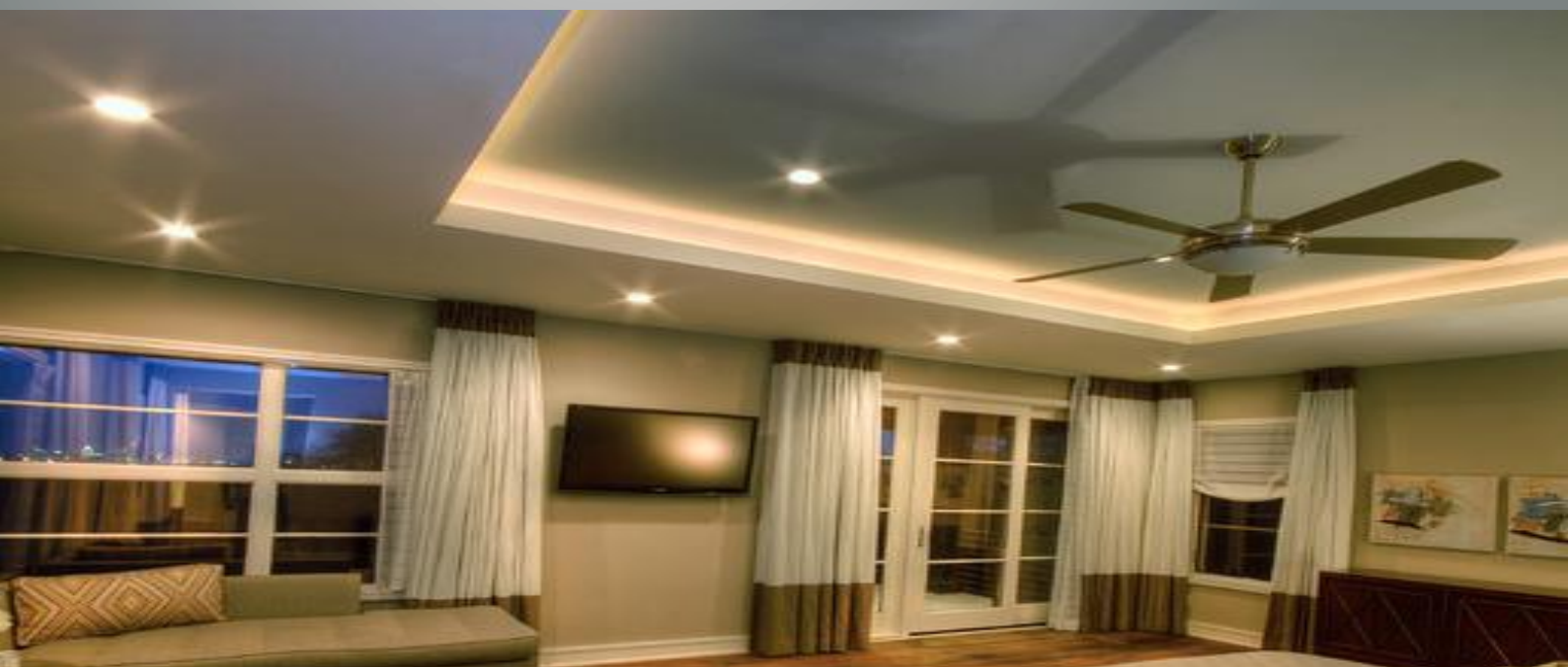
MAGIC LIGHT

CLASSIC DESIGN WITH SMART FEATURES

KURA Magic Light application that allows the latest generation of light Bulbs, Light Strips, and Bridges to change their color based on your mood.

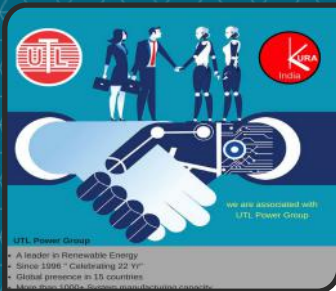
TECHNICAL SPECIFICATION AND FEATURES

- ✦ Brightness control : you can brightness of light form 0 to 100 as per your need.
- ✦ Effect speed : Best advantage of this app is you can change the speed of effect that you have selected.
- ✦ Color box : you can set 16 million color of led by just touching on color box.
- ✦ Pre-defined Mode : In this app 4 predefined mode are available.
- ✦ Individual control of 2 different light





Customer Care No. 0120-4124578
Info@digitalkura.com
www.digitalkura.com



KURA INN (P)LTD
Corporate office
G-43, SEC-3, NOIDA-20131

